

IT Racks, Power Distribution Units and Monitoring Software
SmartEdge Enclosures

Eaton SmartEdge Enclosure System (SES)

Intelligent 
Power Manager

Visual 
Power Manager

Intelligent
PDU's



EATON

Powering Business Worldwide

Eaton's SmartEdge Enclosure System (SES)

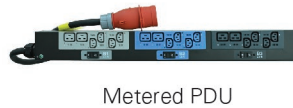
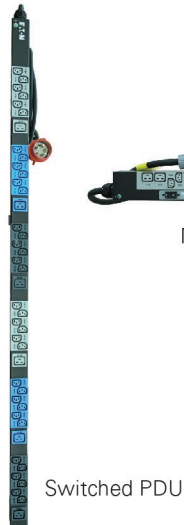
The **SmartEdge enclosure system** seamlessly integrates the physical infrastructure of the computer room and data center to provide an efficient and integrated solution. The rack-level power supply, power distribution, thermal energy management, environmental monitoring, system connection, remote and distributed management are built into one system, providing an integrated solution with high reliability, easy maintenance, and high scalability.

So why just settle for a piece of sheet-metal, experience **Eaton's SES** which comes along with Contextual Visibility with Automation & Resiliency

IT Enclosure / Racks



Intelligent iPDU



Sensors



Software



Visual Power Manager

Intelligent Power Manager
Understand Edition

Intelligent Power Manager
Manage Edition

Intelligent Power Manager
Optimize Edition

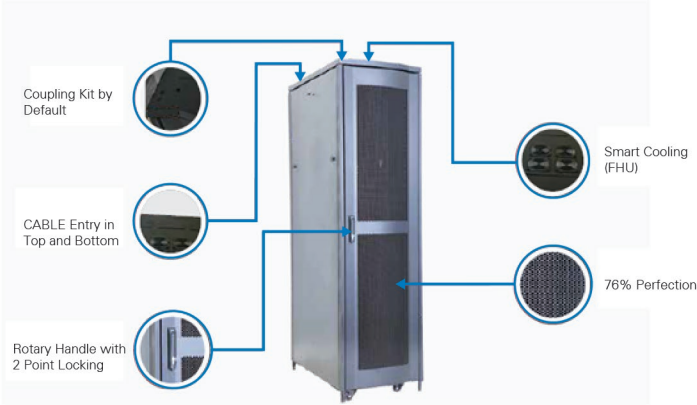
Applications

- Edge computing
- Finance, insurance, securities (branches and business nodes)
- Government digital systems, educational and medical institution computer rooms
- Transport, shipping, commercial retail (computer rooms and branch nodes)
- Computer rooms of large-sized enterprise branches and small and medium-sized enterprises
- Telecommunications, 5G computer rooms



Technical Specifications

Rack



19" DISTRIBUTION AND SERVER RACKS SERIES 600 / 800 x 1000	
SES-42U-6x10-S1	19" free-standing rack height 42U, width 600, depth 1000, Convex Door, load rating 1000 kg, black (RAL 9005)
SES-42U-8x10-S1	19" free-standing rack height 42U, width 800, depth 1000, Convex Door, load rating 1000 kg, black (RAL 9005)
SES-36U-6x10-S1	19" free-standing rack height 36U, width 600, depth 1000, load rating 1000 kg, black (RAL 9005)
SES-27U-6x10-S1	19" free-standing rack height 27U, width 600, depth 1000, load rating 750 kg, black (RAL 9005)
SES-18U-6x10-S1	19" free-standing rack height 18U, width 600, depth 1000, load rating 500 kg, black (RAL 7016)
Eaton Part No 19" DISTRIBUTION AND SERVER RACKS SERIES 600 / 800 x 1200	
SES-42U-6x12-S1	19" free-standing rack height 42U, width 600, depth 1200, Convex Door, load rating 1000 kg, black (RAL 9005)
SES-42U-8x12-S1	19" free-standing rack height 42U, width 800, depth 1200, Convex Door, load rating 1000 kg, black (RAL 9005)

Accessories	Eaton Part Code
BLANKING PANEL 1U	SES-S1-BIP1U
BLANKING PANEL 2U	SES-S1-BIP2U
BRUSH PANEL 1 U	SES-S1-BrP1U
Full Tray for Floor Mount	SES-S1-FTFM
FAN for Rack -90CFM	SES-S1-CFM90
1 U Cable Manager Plastic	SES-S1-CM1U

Standard Equipment
2 pairs of 19" sliding vertical extrusions, 4 castors, Earthing kit
Perforated Front door with 3 Point lock and, universal key 333, DIN profile
Perforated Removable rear panel with knock-out cable entry and lock
side panels with lock, Load rating: 1000kg / 750 kg / 500 kg
All 800 mm wide racks come with vertical cable manager built-in
20 mounting kits, Rack is delivered assembled and palletized

Intelligent iPDU

No	Part NUMBER	Sales Description	Form Factor	Outlet		Current Rating	Phase	Input Plug	Output Plug		Metering Capability	Receptacle Control	Branch Monitoring
				No of Outlets					IEC C13	IEC C19			
Metered PDU													
1	802002001	M-PDU,1U 12,16A 1P C20 12,0 230/230V	1U	12	16 Amps	1-Phase	C20 Inlet	12	0	√	x	√	
2	802002002	M-PDU,1U 12,16A 1P IEC309 12,0 230/230V	1U	12	16 Amps	1-Phase	IEC 60309	12	0	√	x	√	
3	802002003	M-PDU,ZU 24,16A 1P IEC309 20,4 230/230V	Zero U	24	16 Amps	1-Phase	IEC 60309	20	4	√	x	√	
4	802002004	M-PDU,ZU 16,32A 1P IEC309 12,4 230/230V	2U	16	32 Amps	1-Phase	IEC 60309	12	4	√	x	√	
5	802002005	M-PDU,ZU 24,32A 1P IEC309 20,4 230/230V	Zero U	24	32 Amps	1-Phase	IEC 60309	20	4	√	x	√	
6	802002006	M-PDU,ZU 34,32A 1P IEC309 28,6 230/230V	Zero U	34	32 Amps	1-Phase	IEC 60309	28	6	√	x	√	
7	802002007	M-PDU,ZU 42,32A 1P IEC309 36,6 230/230V	Zero U	42	32 Amps	1-Phase	IEC 60309	36	6	√	x	√	
8	802002008	M-PDU,ZU 30,16A 3P IEC309 24,6 400/230V	Zero U	30	16 Amps	3-Phase	IEC 60309	24	6	√	x	√	
9	802002009	M-PDU,ZU 42,16A 3P IEC309 36,6 400/230V	Zero U	42	16 Amps	3-Phase	IEC 60309	36	6	√	x	√	
10	802002010	M-PDU,ZU 24,32A 3P IEC309 12,12 400/230V	Zero U	24	32 Amps	3-Phase	IEC 60309	12	12	√	x	√	
11	802002011	M-PDU,ZU 42,32A 3P IEC309 30,12 400/230V	Zero U	42	32 Amps	3-Phase	IEC 60309	30	12	√	x	√	
Switched PDU													
1	802003001	S-PDU,1U 8,16A 1P C20 8, 230/230V	1U	8	16 Amps	1-Phase	C20 Inlet	8		√	√	√	
2	802003002	S-PDU,ZU 16,16A 1P C20 12,4 230/230V	Zero U	16	16 Amps	1-Phase	C20 Inlet	12	4	√	√	√	
3	802003003	S-PDU,1U 8,16A 1P IEC309 8, 230/230V	1U	8	16 Amps	1-Phase	IEC 60309	8		√	√	√	
4	802003004	S-PDU,ZU 24,16A 1P IEC309 20,4 230/230V	Zero U	24	16 Amps	1-Phase	IEC 60309	20	4	√	√	√	
5	802003005	S-PDU,2U 16,32A 1P IEC309 12,4 230/400V	2U	16	32 Amps	1-Phase	IEC 60309	12	4	√	√	√	
6	802003006	S-PDU,ZU 24,32A 1P IEC309 20,4 230/400V	Zero U	24	32 Amps	1-Phase	IEC 60309	20	4	√	√	√	
7	802003007	S-PDU,ZU 32,32A 1P IEC309 24,8 230/230V	Zero U	32	32 Amps	1-Phase	IEC 60309	24	8	√	√	√	
8	802003008	S-PDU,ZU 44,32A 1P IEC309 34,6 230/230V	Zero U	44	32 Amps	1-Phase	IEC 60309	34	6	√	√	√	
9	802003009	S-PDU,ZU 24,16A 3P IEC309 18,6 400/230V	Zero U	24	16 Amps	3-Phase	IEC 60309	18	6	√	√	√	
10	802003010	S-PDU,ZU 36,16A 3P IEC309 30,6 400/230V	Zero U	36	16 Amps	Phase	IEC 60309	30	6	√	√	√	
11	802003011	S-PDU,ZU 24,32A 3P IEC309 12,12 400/230V	Zero U	24	32 Amps	Phase	IEC 60309	12	12	√	√	√	
12	802003012	S-PDU,ZU 36,32A 3P IEC309 24,12 400/230V	Zero U	36	32 Amps	Phase	IEC 60309	24	12	√	√	√	

Technical Specifications

Sensors

SKU	Description
EA9102	Single Temperature Sensor
EA9103	Temperature + Humidity Combo Sensor
EA9105	(3) Temperature + Humidity Combo Sensor
EA9112	Rope Leak Sensor
EA9109	Magnetic Door Switch (open/close)
EA9110	Dry Contact Input Cable
EA9111	Spot Leak Sensor
EA9106	Sensor Hub

Software - Intelligent Power Manager

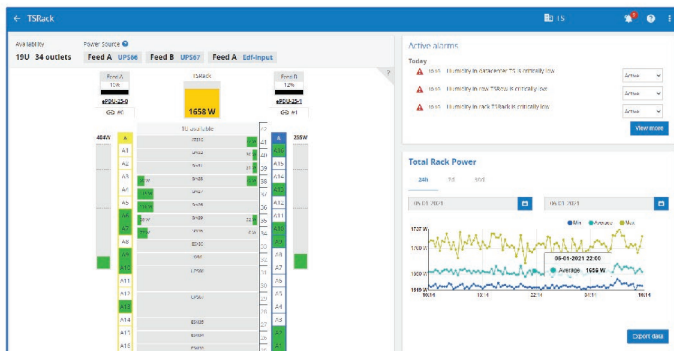
Value Benefits

Contextual visibility

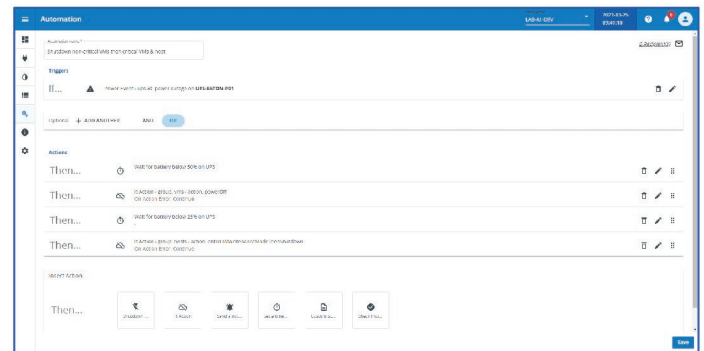
- Choose an enclosure system vs an IT Rack for Edge sites
- Smart Enclosures can give surprisingly more value than simple IT Racks at a fraction of the extra cost.

Automation & Resiliency

- Intuitive business continuity policy automation at VM & cluster level
- Remote, graceful shutdown of physical and virtual IT infrastructure
- Automated control of power infrastructure



Rack visualisation



Automation Platform



India Head Office

Eaton Power Quality Pvt. Ltd.
2, EVR Street, Sedarpet
Industrial Estate
Pondichery-605111
Tel: +91 413 2672000
Enquiries - EatonElectricalIndia@eaton.com

Offices Across India

Mumbai
Unit No. 101 & 102 "A" wing,
1st Floor, 215 Atrium, Andheri - Kurla
Road, Andheri (East),
Mumbai - 400 059.
Mobile: +91 8291967878, 9321199760

Chennai
No. 36, Nehru Street,
Old Mahabhalipuram Road,
Sholinganallur, Chennai-600 119, India
Tel: +91 44 66501544/45
Mobile: +91 9884775774, 9381381414

Delhi
Unit A1 & B1, 3rd Floor, TDI Centre
Plot No. 7, Jasola, New Delhi-110025
Tel: +91 11 45851800
Mobile: +91 9711789514, 9310003714,
9582250517

Bangalore
4th Floor, Prestige Atrium, Central Street
Bangalore 560001, India
Tel: +91 80 49012200
Mobile: +91 7290030399, 9742252517

Pune
Om Chambers, 1st Floor, Office No. 102
T-29/31, Bhosari MIDC,
Near Sharayu Toyota Show Room,
Bhosari, Pune - 411 026, Maharashtra, India.
Tel: +91 20 71450020

Kolkata
Mobile: +91 8334020220

Coimbatore
Mobile: +91 9381381414,
9344893165

Hyderabad
Mobile: +91 9963088883

Ahmedabad
Mobile: +91 9377464065

Chandigarh
Mobile: +91 9501177119

Indore
Mobile: +91 7580942940

Vadodara
Mobile: +91 7290009954